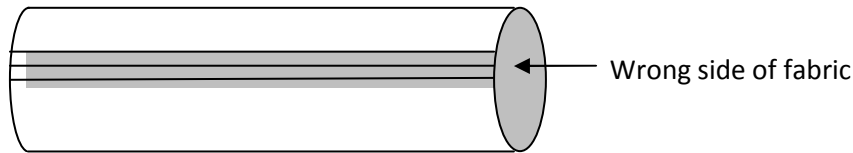


## HOW TO MAKE A TEMPORARY SLEEVE FOR YOUR QUILT

1. Cut a strip 9" wide across the width of your fabric
  - \*The length of your strip should be 1-inch less than the width of your quilt.
  - \*If your quilt is exceptionally wide, you can place two or three separate sleeves along the top.
2. Turn under both ends  $\frac{1}{2}$ " and stitch so the edges are finished.
2. Fold the strip in half, lengthwise, WRONG sides together.
3. Sew together using  $\frac{1}{2}$ " seam.
4. Press seam open.
5. Press the fabric tube again, placing the seam in the middle of one side.



6. Pin or hand stitch the sleeve with the seam side down, to the top of the back of the quilt, just underneath the binding edge.
7. For the show: Pin or hand stitch the bottom edge to the quilt (do not go through to the front side of quilt).
8. For a more permanent sleeve: Instead of letting the sleeve lie flat against the quilt back, make a small pleat in the tube at the bottom edge, taking up about  $\frac{1}{2}$ " to  $\frac{3}{4}$ " of fabric. Pin the bottom edge of the sleeve in place and hand sew the underneath edge of the pleat to the back of the quilt. This leaves a little give to accommodate a hanging bar.