

## ■ Upcoming programs

- **MARCH:** Hone your voting skills! We vote for winners of the Skinny Quilts challenge. Seven categories mean seven choices.
- **APRIL:** TBD

## ■ Dig in with friends!

Members who crave quilty companionship are invited to join in creating a new Guild tradition: dining out on meeting days!

Members are invited to come to lunch after the AM meeting or supper before the PM meeting. Morning folks have the advantage of hearing the location at the meetings, but evening members, to avoid confusion, will meet at Three



Eyed Fish each month at 5:30 (1970 Keene Rd, Richland). Three Eyed Fish has been notified and they're excited to welcome us each month.

For more info about lunch, text Laurel Sutton 509-987-4658. For supper, text Carol O'Callaghan 509-289-9065 or just show up at Three-Eyed Fish, no changes are expected.

## ■ Quilt Show jobs — and beyond

- Sign up to work, especially Thursday for help with set-up: Those who sign up are welcome to join us for lunch that day (no signing, no eating).
- Find the sign up sheet at the guild meeting and get the ones you really want ahead of time on the website.

# UFO Project could reduce to-do lists



ur Guild-wide Quilt Along, "UFO Project," got underway last month. But you can enter it any time, right into the fall!: Just

note, entering earlier will give more chances to earn prizes. **(See page 8 for the entry form).**

Abby Glassenberg of the Craft Industry Alliance suggests a trio of criteria – freedom, fulfillment, and fun. Will the project allow for creative freedom? Will it bring spiritual or emotional or financial reward? Will you enjoy working on it? She believes that boundaries like this will “protect your well-being and ensure that you’re doing your best work.”

As I inventoried my closets and bins, I realized that I am most interested in my USOs (unstarted objects), stacks of varying heights of fabrics I thought would play well together. Very few are linked to patterns. Some have a vague plan. But most will give my talent a thorough workout. Maximum freedom. Maybe next year they can go on the UFO list.

My tops are languishing because they have reached the stage where they require an outlay of treasure (buying bats and backs) and time. But there are still design decisions to be made and quilting skills to build. So they can offer some fun and fulfillment.

Getting the UFOs off my conscience will be a good thing. And getting them out of the closet will make room for more USOs. Fill out the form and bring it to the next meeting and get those UFOs off your radar.

## President's Message



Laurel Sutton  
2020 Guild President

— Laurel

# Let your star shine in our upcoming show

Spring is in the air and it's time to raise our sights and "Focus on the Stars in 20/20." It will be here in just a few weeks. We are so excited to see everyone's quilts in the show, and to shop at our vendor booths in our merchant mall.

Drop off your "Quilts on a Diet" challenges at Vac & Sew, Fabric 108, Janean's Bernina or Quiltmania by March 7, labeled with name, phone number and category.

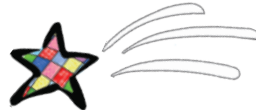
If you have taken home Quilt Show

signs for the show please put them out in your yards and on the roads by March 6 to invite the community to our show.

Many fun and important quilt show jobs are up for grabs. Find your favorite one and sign upon the website by following links to the quilt show. It's time for everyone to shine!

So let's all invite our friends to come out and focus on the all of our quilt show stars. See you there!!

— Candy



# Inside this issue

President's Message . . . . .	1
March/April Programs . . . . .	1
Meeting Day Meetups Begin . . . . .	1
Show Challenge Rules and Deadline . . . . .	3
Paisley and Plaid Project . . . . .	3
March-April Quilt Block . . . . .	4
Gallery Show . . . . .	5
Skillbuilders Schedule . . . . .	5
Velda Newman Workshop Registration . . . . .	6
Shop Hop Tots . . . . .	7
UFO Challenge (print out, turn in). . . . .	8
"Classifieds" and Ad Info . . . . .	9
Linus Meet-Ups and Birthdays. . . . .	11



It's a star, it's a UFO, it's "Volare!" Designed by Emma How of Adelaide, Australia. "Volare," Italian for "to fly" or "to soar," is featured along with other works of art at [How's blogspot](#) & [Pinterest page](#). Google [Sampaguita Quilts](#).

Send corrections, ideas, photos, feedback to Carol O'Callaghan at [oc.carol@gmail.com](mailto:oc.carol@gmail.com). Input about your special quilting moments are welcome and can help make the newsletter a shared space for our guild community. Thanks!

## Threads and Notions

### ■ #hashtaghelptanks

Help spread the word when you post photos of the show on Instagram, Twitter and anywhere else hashtags apply by tacking on one or both of these: #tricitiequiltguild #TriCitiesquiltshow.

By the same token you can find and share pictures of the show if you search for those two hashtags yourself (and forward them). Social media is one of the best ways to catch the eye of quilt lovers everywhere who might live here or have a reason to be passing through.

### ■ Retreat all booked up

All spots for the Guild's Spring Retreat in April at Cove, Oregon are taken. We hope you'll join us at the Fall Retreat Sept 22-27! Watch for dates and info in July/August.

### ■ TCQG gets a mention!

- "Ruralite" coverage — Electricity cooperative Benton REA featured the group Sew What, who they dubbed "a raucous and passionate group of quilters," and mentioned the quilt show in their latest newsletter. This newsletter reaches rural customers far and wide throughout the Northwest.
- The Quilt Show (Alex Anderson and Ricky Tims) shared a photo from our

Gallery in the Park exhibit – the two Stars for a New Day quilts (the Sue Garmon pattern was TQS' block of the month in 2009).

### ■ Show quilts year round

Three quilts are now on display at Integrity Financial Services on Bradley Blvd in Richland. This business venue display breakthrough is hopefully just the start of many such connections throughout the Tri-Cities.

Quilts will have a tag advertising the Guild and White Bluffs Center, and the maker, as well as a price if the quilt is for sale. If you know of a business that



"Savannah" by Mark and Linda Palmer  
Design by Tony Whitney

would like to display quilts, or want to display a quilt at a business in the coming months (for sale or not) contact Mark Palmer [chi3palmers@gmail.com](mailto:chi3palmers@gmail.com).

## WHO DO I CONTACT?

<b>Communications</b>	Dianne Cramer
Website	Karen Brun
Facebook	Dianne Cramer
	Ginny Hildreth
Newsletter	Carol O'Callaghan
<b>Community Service</b>	Cyndy Underwood
<b>Education</b>	Jo Matthias
Workshops	Cheryl Garrison
Library AM	Sharon Clement
Library PM	Jo Matthias
<b>Quilt Show</b>	Candy Crandall
Show Co-Chair	Geneva Carroll
<b>Member Services</b>	Ardith Eakin
Retreats	Ginny Coffman
Friendship Groups	Carol Capelle
Sunshine	Sandy Moroney

Tri-City Quilters' Guild 

## EXECUTIVE BOARD & CHAIRPERSONS

### OFFICERS

Each officer has 1 vote;  
President only votes to break a tie

<b>President</b>	Laurel Sutton
<b>Treasurer</b>	Trista Self
<b>VP AM</b>	Mark Palmer
<b>VP PM</b>	Louise Peterson
<b>Guild Secretary</b>	Nancy Green

[www.tcquilters.org](http://www.tcquilters.org)  
 [facebook.com/tcquilters.org](https://facebook.com/tcquilters.org)



2020

# quilt show challenge

## "SKINNY QUILTS"

### BASIC RECIPE:

1. 7" or less wide
2. 40-42" long (width of fabric)
3. All entries will be hung vertically
4. Three layers – top, batting, backing

### OPTIONS:

- Any fabric, any embellishments
- Any edge finish (bind, face, envelope...)
- Plastic canvas strip available for flat hanging
- Enter up to 5 pieces in up to 5 categories
- Quilt show theme: stars
- Seasonal/Holiday
- 3-D non-fabric embellishment
- Applique
- Embroidered and/or painted, bleached, dyed
- Traditional blocks, pieced by any method
- 16-years-olds & under category
- Submit Feb 24 – Mar 7, 2020 at many local fabric retailers
- Identify with your name, phone number and category.



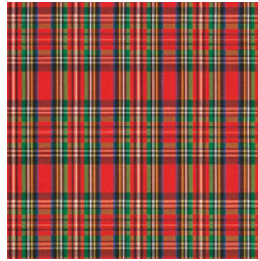
**Deliver to Janean's  
Bernina, Quiltmania,  
Discount Vac & Sew, or  
Fabric 108 by March 7.**

# Pairing up Paisleys and Plaids

## PRESENTED BY THE COMMUNITY SERVICE TRIBE

Whether your design preference is wiggly or straight, you will get a charge out of this year's Community Service challenge.

If you missed the February meetings, you missed the historical background portion of the program sponsored by your Community Service Tribe. But fear not! You need not miss the opportunity to



create a comfort quilt with paisley and plaid fabrics.

Like we did last year [with hearts], we are sharing the Closet wealth to subtract from our inventory and add to production. Also to pique your creativity. The boxes of paisleys and plaids that we took to the meetings will go back to the Closet, and you can shop for yourselves (phone Kathy Kaser-Nichols first to make sure she's there: 509-586-7335).



### THESE ARE THE DESIGN PARAMETERS:

- Use at least one plaid and one paisley.
- You can simply cut them into patches and make any block or pattern.

### OR

• You can arrange any fabrics into plaid or paisley shapes (numerous commercial patterns give that criss-cross look for plaid; paisley can be applied or painted or stenciled or embroidered).

### OR

- Create the plaid or paisley with your quilting lines.

You have a little more time this year: the deadline is October instead of August. Bring your 40x40 or 40x60 top or quilt to the October meetings for a gallery walk and celebration!

## White Bluffs 2020 exhibits invite participation

**Stars – Now through Mar 21**

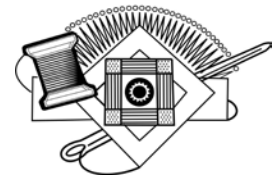
**Say it with Flowers: March 24 - May 30**

**Show Your Stripes: June 2 - August 1**

**Baskets of All Kinds: August 4 - Oct 3**

**Animals Wild and Mild: Oct 6 - Nov 28**

**Winter Holidays: Dec 1 - Jan 2**



Each exhibit will feature quilts from the collection, but more could be included. If you would like to share something that fits one of the themes, please contact Laurel Grove, [lkgprs@hal-pc.org](mailto:lkgprs@hal-pc.org) or 509-943-0798 three or more weeks prior to the launching of each new exhibit.

## The whys and hows and rewards of pre-sale tickets

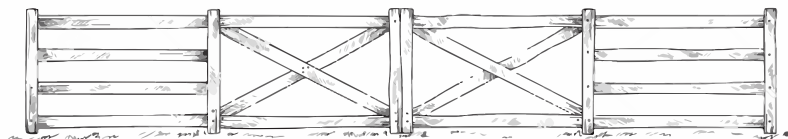
Want to buy a ticket for friends and family for the show, but don't want to risk the ticket cost if they won't go? (Whoa that rhymes.) The perfect solution: pick up some pre-sale tickets, which will only cost you the \$8 admission if your potential guest does attend. It's a win on all

fronts.

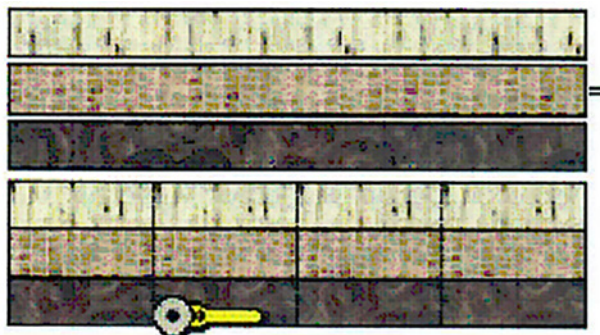
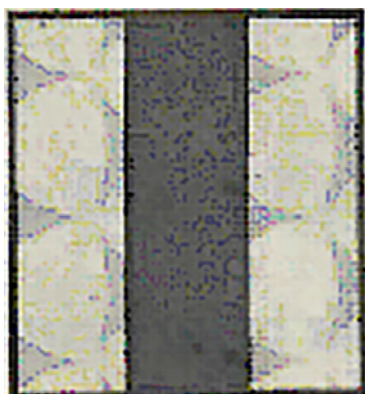
Last year this was a great fundraiser (about \$500!), got new people in the door, and helped you thank your friends and coworkers, neighbors, kids' teachers, grocery clerks, hair dressers, etc! Get tickets at the March meeting or contact Jean Keaveney (509-947-5353).

# X-RAIL FENCE

Here is yet another variation to a simple theme, the Rail Fence block. I continue to be amazed at how you can change little things and get a totally different look. This block, however, is more than just a small change to the rail fence. This pattern comes from a 1969 source, the same year Neil Armstrong walked on the moon.



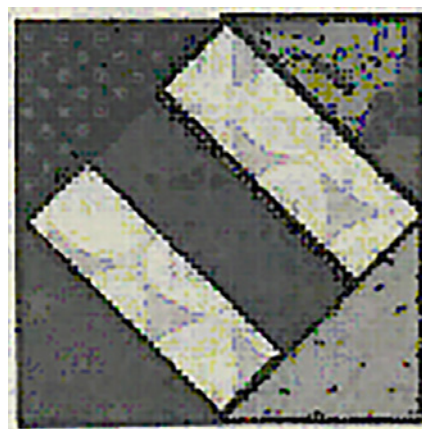
In honor of our planet (Earth Day is coming!), the CS tribe has selected some solids for the four corners (they will all be the same). You'll choose a  $7\frac{1}{4}$ " x WOF strip for the corners – either kelly/forest green for a tribute to the woods and meadows or a royal blue for a tribute to our oceans, rivers, and lakes. In keeping with your theme, you'll provide two  $2\frac{1}{2}$ " x 26" strips and one  $2\frac{1}{2}$ " x 26" accent. The two outer strips should coordinate with the corner pieces and the center strip should be a 'zinger'.



Sew your three  $2\frac{1}{2}$ " x 26" strips together then cut into four  $6\frac{1}{2}$ " x  $6\frac{1}{2}$ " blocks. Press seams to the dark side. Use a scant  $\frac{1}{4}$ " seam (just slightly under  $\frac{1}{4}$ "). Remember there is nothing magic about  $\frac{1}{4}$ ", it just makes the math easy.

Now cut your  $7\frac{1}{4}$ " square twice on the diagonal to create the four setting triangles. Sew one triangle to each side of the rail fence unit to make an X- Rail block.

Your finished block should be 9" x 9".



*Used with permission of Quilters Cache, [www.quilterscache.com](http://www.quilterscache.com).  
Any modifications are purely the responsibility of the Tri-Cities Quilting Guild.*





### Double Vision: Masters of their Craft

Allied Arts' Gallery at the Park featured the Guild in January during its bi-annual tribute to our guild's tremendous creativity and talent. Among the artists, Geneva Carrol (left) and Cheryl Garrison stitched up the 2009 TQS BOM Stars for a New Day (designed by Sue Garman) in two totally different ways. The quilts were made by the women before they knew each other and now they have become great friends. At left, other stunning quilts in the Allied Arts show.

## 2nd Saturday Skillbuilders launched in January; here's some of what's ahead!

At White Bluffs Quilt Museum, 294 Torbett, Richland. Join us for some skill building (and homemade soup for lunch—optional: \$5)!

### ■ March 14: 10-noon

#### • Susie Shipp – Origami Stars

Join us while Susie show us how to make a template and fold your fabric into stars. This is a fun challenge!

#### • Bring:

- 8" x 8" pieces of cotton fabric
- Your best smile

### ■ April 11: 10-noon

#### • Laurel Sutton - Improv: Cutting and Seaming Gentle Curves

Piece like an artist! Follow in the footsteps of Jean Wells, Rayna Gillman, and Cindy Grisdel. Practice ruler-free cutting and slow-ish stitching with careful pressing; create some ripply slabs and arrange them asymmetrically across a pillow top, place mat, or table runner.

#### • \$5 for the Class

#### • Bring:

- Your rotary cutter & mat (or borrow from White Bluffs)
- Your sewing machine and supplies (or rent from White Bluffs)



- ½ yd of solid (read-solid) in your favorite color
  - scraps or strings to coordinate (prints large or small, plaids, stripes, even orphan blocks)\*
- \*I'm ready to share my own accumulation of schnibbles & bits; they're sorted by color.

### ■ April 11: 1-4 pm

#### • Color: Messing Around/Mixing Fabrics

The principle here is expressed by Roberta Horton: "I love fabric, so quilts made with a lot of different fabrics give me more to look at, more to love. I am forced to read the entire surface of the quilt to find all the variety in the fabric patterns and colors. It's sort of like a treasure hunt." We'll talk a little color language, but the Travelling Patches will let you play around with personality and scale too.

#### • \$5 for the Class

- Bring: - Yourself and friends! More people and opinions make this interactive workshop merrier and more instructive; solve a suite of design, occasion, shape, size and color challenges — there are no wrong solutions.

# Velda Newman Workshop

Tuesday, May 19 and Wednesday May 20, 2020

## TEXTURE AND FORM

“Nature is an endless source of beauty and inspiration. With this in mind, learn how to get rid of the “flat” look and turn your fabric into something interesting! Students will create texture by using simple machine techniques which can be used for quilts or clothing. The samples you create the first day will be used the second day as a basis for learning how to apply paint to textiles. Using water-based acrylics, inks and other items I will furnish, you will learn how to create depth and shading on your fabric.”

Location: Finley Grange

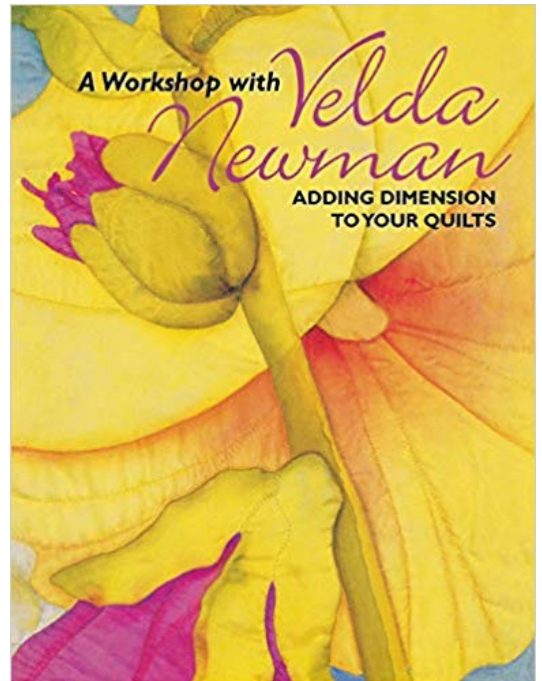
Date: Tuesday, May 19 and Wednesday, May 20

Time: 9:30AM - 4:30PM

Cost: \$175

Supply list will be emailed

Questions?? Contact Cheryl Garrison at (616) 813-6520 or [clock902@aol.com](mailto:clock902@aol.com)



Sign up online at <https://tcquilters.org/learn-with-us/register.html> OR fill out the form below.



## Velda Newman Workshop

Two-day workshop on Tuesday, May 19<sup>th</sup>, and Wednesday, May 20<sup>th</sup>,  
\$175 (\$50 deposit required) Workshop must be paid in full no later than April 15<sup>th</sup>.

Name: \_\_\_\_\_

Phone: \_\_\_\_\_

Email: \_\_\_\_\_

Street address: \_\_\_\_\_

City: \_\_\_\_\_ State \_\_\_\_\_ ZIP \_\_\_\_\_

Mail registration form along with check for \$50 or total amount (payable to TCQG) to:

TCQG Treasurer  
PO Box 215  
Richland WA 99352



# Shop Hoppers of all sizes pop up for fabric frenzy

Eighty-nine people arrived at White Bluffs Quilt Museum the morning of Jan 25 to pick up passports for the annual Shop Hop – none more bright-eyed and bushy-tailed than the brood of Shipleys at right. A whole day of trekking through fabric stores was eagerly anticipated by these kids who see fabric as treasure. They play with it like toys and do odious chores to get their own fabric as a reward, says Monica. She is teaching them all to sew; the five oldest even have their own Challenge quilts entered in the show! Pictured with Monica and her husband Michael are (clockwise from top left) Seth (7), Hannah (2), James (5), John (4), Lydia (then 10 months), and Sarah (6). Undaunted by their day in the shops, the Shipleys had fun seeing the quilts displayed at the museum before going home. “It was a great way to finish our Shop Hop,” Monica said.



## “Quilting Queens”

To the tune of Abba’s “Dancing Queen”  
Shared by Elaine Brouillard  
Author Unknown



*We can sew, we can jive, having the time of our lives  
See us girls, watch that scene, digging the Quilting Queens*

*Packed our bags and ready to go  
Friends are there that we will know  
Cruising is the best, getting in the swing  
Truly it is our thing  
A new technique that we can try  
We just laugh, we never cry  
With encouragement, everything is fine  
We’re in the mood to quilt  
And we are not going to quit...*

*We are the Quilting Queens, we are older than seventeen  
Quilting Queens, feel the beat from the sewing machine, oh yeah!  
We can sew, we can jive, having the time of our lives  
Ooh see us girls, watch that scene, digging the Dancing Queens*

*Layer Cakes they turn us on  
Buy a few before they’re gone  
Sew them all together, anything will do  
We’re in the mood to quilt  
And we’re not going to quit...*

*We are the Quilting Queens, we are older than seventeen  
Quilting Queens, feel the beat from the sewing machine, oh yeah!  
We can sew, we can jive, having the time of our lives  
Ooh see us girls, watch that scene, digging the Dancing Queens*



# TCQG UFO CHALLENGE 2020

Give to Carol Capelle AM  
or Lois Pederson PM



(See Laurel's Message on page 1.)  
Earn a fat quarter for every completed UFO you show and tell  
at meetings through November, AND each listed UFO completed  
earns a chance to win grand prize.

NAME: \_\_\_\_\_

Project **March** Name/Explanation \_\_\_\_\_

What Needs To Be Done \_\_\_\_\_

Project **April** Name/ Explanation \_\_\_\_\_

What Needs To Be Done \_\_\_\_\_

Project **May** Name/ Explanation \_\_\_\_\_

What Needs To Be Done \_\_\_\_\_

Project **June** Name/Explanation \_\_\_\_\_

What Needs To Be Done \_\_\_\_\_

Project **July** Name/Explanation \_\_\_\_\_

What Needs To Be Done \_\_\_\_\_

Project **August** Name/ Explanation \_\_\_\_\_

What Needs To Be Done \_\_\_\_\_

Project **September** Name/Explanation \_\_\_\_\_

What Needs To Be Done \_\_\_\_\_

Project **October** Name/Explanation \_\_\_\_\_

What Needs To Be Done \_\_\_\_\_

Project **November** Name/Explanation \_\_\_\_\_

What Needs To Be Done \_\_\_\_\_





*Miss Annie's*  
*Kathy Rogers*

Longarm Quilter  
missannies1742@gmail.com

(509) 438-9384  
(509) 586-1680



**Mid-Columbia  
Machine Quilters Guild**

Meetings held on the last Saturday of:  
Jan, Feb, Apr, Jun, Aug, Oct

**Meetings Currently Held in**  
Banner Bank Conference Room @ 10am  
203 W. 1st Ave, Kennewick WA 99336-3930

**Please Contact for Further Information**  
tanyabunch@msn.com  
ednawigger@outlook.com



## ROAD TRIP SHOWS

**FIBER FEST — PNW QUILT AND FIBER ARTS MUSEUM**  
A fundraiser to support the Museum's Exhibits and Programs  
Sunday April 26, 10 am - 4 pm • Free.  
Maple Hall, 104 Commercial St, La Conner WA

Treat yourself to unique and hard-to-find textiles and embellishments, many uniquely hand-made or vintage. Try a new shade of hand-dyed yarn.

**Attend a special Preview Party & Sale Saturday, April 25, 4-6 pm.**  
Tickets \$15 available at [www.qfamuseum.org](http://www.qfamuseum.org).

Make elections and purchases before the event opens to the public, and enjoy wine, appetizers and a door prize that evening.  
For more information, contact [kathleene212@gmail.com](mailto:kathleene212@gmail.com).

**"BE A MATERIAL WITNESS" EVERETT QUILT SHOW**  
Friday and Saturday, May 1-2 10 am - 5 pm both days  
Edward D Hansen Conference Center, 2000 Hewett Ave, Everett WA

Classes • Make & Take • Guest Lectures • And More  
More Information at [www.everettquiltshow.com](http://www.everettquiltshow.com)

## FOR SALE



**Viking Husqvarna Quilter  
Designer Sensor System**  
Recently serviced by Janean's  
Bernina. Feet, Bobbins, Design  
Cards & Lots of Extras \$350.  
Ginny Coffman 509-786-8953

## HELP WANTED • UNDERSTUDIES SOUGHT

**APPRENTICES, UNDERSTUDIES TO LEARN THE ROPES FOR**

- Quilt Show Chair
- Merchant Mall Managers (transportation/logistics)
- Guild President
- Guild Properties Manager

Work with the people who are currently serving in these roles so the transitions can be seamless and painless.  
Contact Laurel Sutton if you are interested (509-420-4322).

## Printing & Advertising Information for Quilter's Press

- **Quilter's Press:** published six times/year by the Tri-City Quilter's Guild
- **FOR PAID ADS:** Send payment to **Tri-City Quilter's Guild Treasurer at PO Box 215, Richland, WA 99352**
- **Subscription:** (6 issues/year) \$10.50 per calendar year, or included in the annual membership dues.
- **Send to Editor (in writing):** your comments, information, articles, announcements. Future events for all quilt groups published free of charge. Editor: Carol O'Callaghan 509-289-9065 [oc.carol@gmail.com](mailto:oc.carol@gmail.com)
- **Advertisements:** TCQG members receive one free personal advertisement (business card size) per year. Business Advertisements: quilt-related shops, fabric shops, and persons who operate a home-based quilt related business. Rates are listed at right. Display ads need not be camera ready.
- **Deadline for Newsletter Input:** 15th of Feb, April, June, Aug, Oct, Dec.

### Quilter's Press Advertising Rates Per Issue

<b>Business Card</b>	\$10 non-members — \$5 for members
<b>Classified</b>	\$1 per line - \$5 minimum (same for members)
<b>Quarter Page</b>	\$20 non members — \$10 for members
<b>Half Page</b>	\$40 non-members — \$20 for members
<b>Full Page</b>	\$80 non-members — \$40 for members
TCQG members may place one free business card size ad per year.	



# Local Shops

Remember to show your card to get your Guild discounts!

## CRAFT WAREHOUSE

7411 W Canal Drive, Kennewick, WA  
509-783-9663

**10% discount on one item per visit - show your card**

## DISCOUNT VAC, SEW & FABRICS

119 W 1st Ave, Kennewick, WA  
509-586-1680  
www.discountvacandsewwa.com

**10% discount for TCQG members n regularly priced fabric**

## FABRIC 108

5215 W Clearwater Ave, Suite 105, Kennewick, WA  
509-586-0108  
Email: fabric108@yahoo.com  
www.fabric108.com

## HONEY BEE QUILTING

713-A 9th St, Benton City, WA  
509-578-4715

## JANEAN'S BERNINA

6303 Burden Blvd in Pasco  
509-544-7888  
www.janeansbernina.com

## JOANN FABRICS

751 N Columbia Center Blvd, Kennewick  
509-736-0970

## QUILTANIA

1442 Jadwin Ave, Richland  
509-946-7467 (PINS)  
Email: quiltmania@verizon.net

**15% discount to TCQG members on fabric & notions**

## SANDY'S FABRICS AND MACHINES

24 N Benton, Kennewick  
509-585-4739 (ISEW)

## THE SEWING BASKET & GIFTS

1108 Wine Country Road, Prosser, WA  
509-786-7367

**10% discount to TCQG members**

Candy Crandall • Longarm Quilter  
*Candy's Quilts & Things*



509-531-8550  
68403 NSR 225  
Benton City, WA  
candysquiltsandthings@gmail.com



Susan Engelking  
(509) 578-4715  
engelking20009@aol.com

**Custom Machine Quilting**

Open Tues - Sat 10am - 4pm  
713-A 9th Street  
Benton City, WA 99320

**Fabrics • Quilting Supplies • Classes**

*Curly Q Quilting*



- Bed Quilts
- Wall Quilts
- Yardage for Bags, Clothing etc
- Basting for Hand Embroidery

Hand-Guided Longarm Quilting  
Joanie Jensen  
509-531-9651



Miss Daisy Quilting

Custom free-motion and hand-guided longarm quilting services

Jodi Hassell  
(509) 378.2586  
missdaisyquilting@gmail.com  
www.facebook.com/missdaisyquilting

**15% off the quilting of your first quilt.**

Members can put a business card here free one month/year. Beyond one month is \$5 per issue. Email oc.carol@gmail.com.

SHOP LOCAL • THANKS!





## Project Linus

*Providing Security  
Through Blankets*

SATURDAY, MAR 7 10 am – 4 pm  
Team Battelle/Workparty  
Quinault Baptist Church  
5400 W Canal Dr, Kennewick

THURSDAY, MAR 12 10 am – 4 pm  
Quilting at the Library  
Richland Public Library  
955 Northgate Dr, Richland

SATURDAY, APR 4 10 am – 4 pm  
Team Battelle/Workparty  
Quinault Baptist Church

THURSDAY, APR 9 10 am – 4 pm  
Quilting at the Library  
Richland Public Library

SATURDAY, MAY 2 10 am – 4 pm  
Team Battelle/Workparty  
Quinault Baptist Church



Info: Lois Pedersen 509 967-9062  
timnlois4@gmail.com

[www.projectlinus-tc.org](http://www.projectlinus-tc.org)

# HAPPY BIRTHDAY!

## MARCH

Vicki Boisoeneau  
Elaine Brouillard  
Ginny Coffman  
Jodi Hassell  
Ginny Hildreth  
Carole Jensen

Linda Morrison  
Judy Leahy  
Jo Matthias  
Monica Shipley  
Laurel Sutton

Sue White  
Cheryl Wiborg

## APRIL

Rebecca Barrington  
Valerie Beaver  
Kathy Billow  
Mary Davis

Michele Dickinson  
Judy Fairbairn  
Pamela Fox  
Linda Glaman  
Brandi Hansell  
Jean Keaveney  
Anne Medford

Taffy Mercer  
Carol Murphy  
Mark Palmer  
Christine Powell  
Beth Ramsay  
Debra Reeve  
Roger Thompson  
Janice Wellington  
Sarah Yearsley  
Dorothy Yount

**If it is your Birthday Month, please bring treats to share at the meetings. Thanks!**

## GUILD FABRIC CLOSET

Need fabric or batting to complete a Guild project? Decluttering the sewing area? Check out the Closet!

Fabric donations are welcome.

Kathy Kaser-Nichols' office  
229 N Fruitland, Kennewick  
509-586-7335

Sewing machines were first purchased by the general public in the 1860s, often by women, which cut down their sewing time from approximately 14.5 hours by hand, to 1 hour using the machine and by 1863, the Singer Manufacturing Company were selling 20,000 machines a year for home use. From website [tenrandomfacts.com/sewing-machine/](http://tenrandomfacts.com/sewing-machine/)

PO Box 215, Dept. QP  
Richland, WA 99352

Return Service Requested



Pick up a pre-sale show ticket for family, friends, and maybe even your favorite barista. See page 3. Also don't forget to load up on quilt raffle tickets!

## MARCH

### Second Monday Board Meeting 3/9

6:30 pm

White Bluff's Museum  
294 Torbett Street, Richland  
(All members are welcome.)

### Third Monday AM Meeting 3/16

10 am Social Time & Refreshments

10:30 am Meeting & Program

Hillspring Church 1153 Gage Blvd, Richland

### Third Monday PM Meeting 3/16

6:30 pm Social Time & Refreshments

7 pm Meeting & Program

Hillspring Church 1153 Gage Blvd, Richland



"Bob" was immortalized in fabric by his owner Cindy Jewell who showed him off last year at the show. Bob, a rescue dog from the Tri-Cities Animal Shelter, was created with several fabric types and topped off with an actual metal name tag. (Original, from a family photo.)

## APRIL

### Second Monday Board Meeting 4/13

6:30 pm

White Bluff's Museum  
294 Torbett Street, Richland  
(All members are welcome.)

### Third Monday AM Meeting 4/20

10 am Social Time & Refreshments

10:30 am Meeting & Program

Hillspring Church 1153 Gage Blvd, Richland

### Third Monday PM Meeting 4/20

6:30 pm Social Time & Refreshments

7 pm Meeting & Program

Hillspring Church 1153 Gage Blvd, Richland